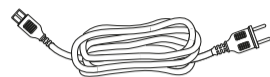
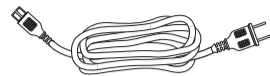


## WHAT'S IN THE BOX



Power connector x 2



Speaker connector



SUBWOOFER OUT connector



Line/MIC connector



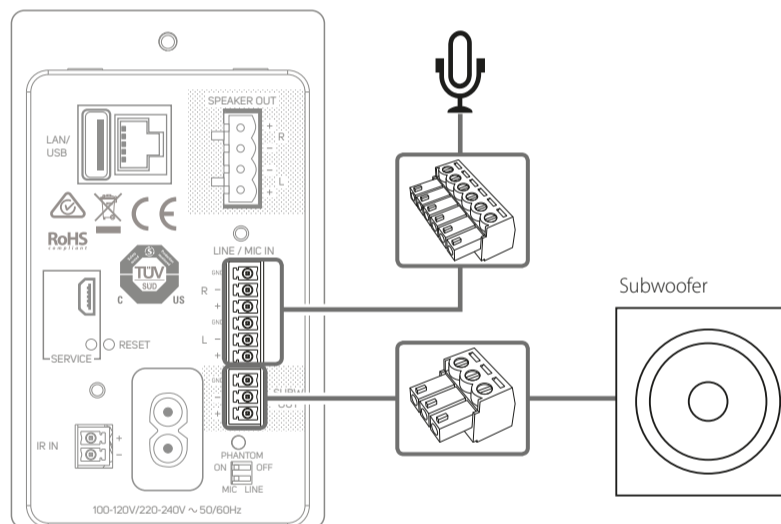
IR IN connector

## IMPORTANT

- Download the latest B160S Owner's manual from the Manuals/Downloads tab of [www.bluesoundprofessional.com/product/B160S](http://www.bluesoundprofessional.com/product/B160S)
- Visit [support.bluesound.com](http://support.bluesound.com) for more information and assistance about setup guides and getting the most out of your B160S.
- The professional custom rack accessory RM160 can accommodate up to six sets of B160Ss without a single modification.

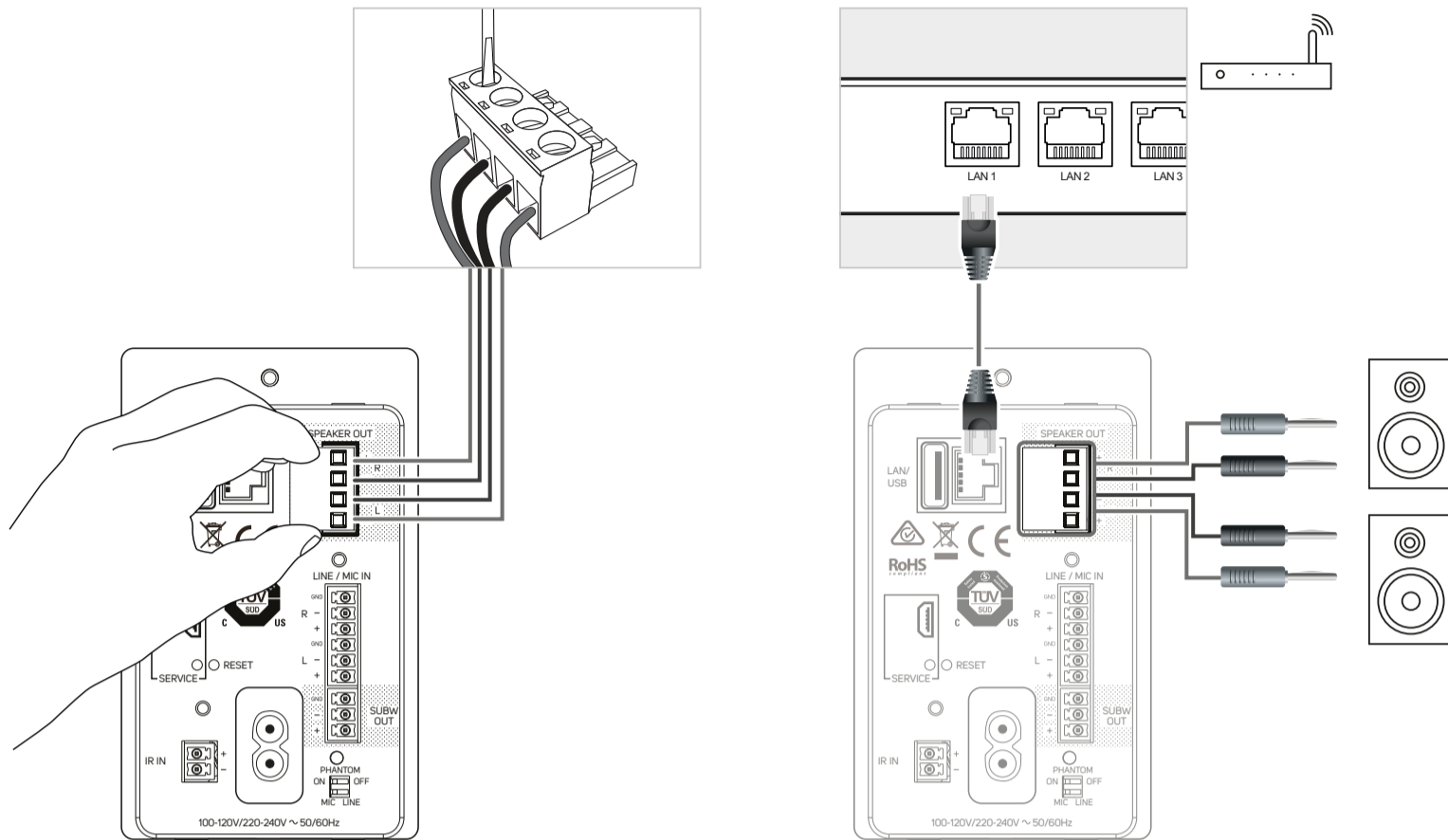
## CONNECT

### EXTERNAL DEVICES



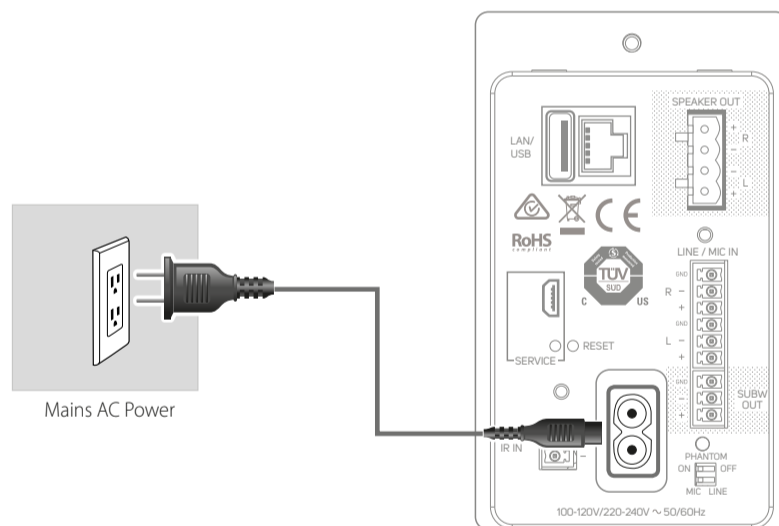
## CONNECT

### SPEAKER TERMINAL BLOCK AND NETWORK



## CONNECT

### POWER



## DOWNLOAD

### BluOS CONTROLLER APP

The BluOS Controller App for Apple iOS devices (iPhone, iPad, iPod), Android devices, Kindle Fire and Windows or Mac desktops are available for download from their respective App stores.



## CONNECT

### MUSIC

Launch the App and explore – everything from your streaming music services, internet radio stations, networked music collections and favorites with quick and easy single-search discovery.