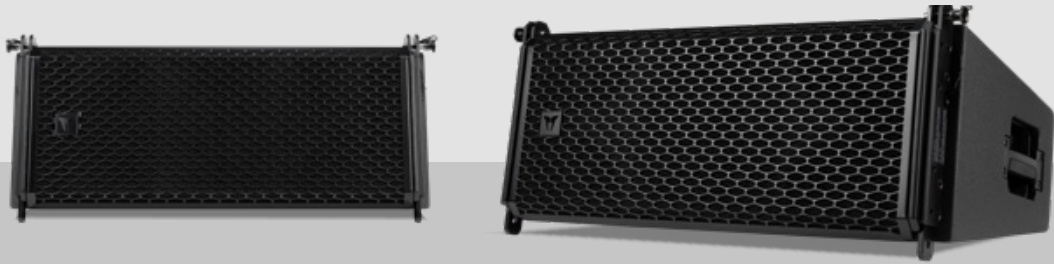




GTX 10

TWO-WAY LINE ARRAY MODULE



Description

The GTX 10 is a 2-way line array module for medium to large-sized, high-demanding touring and install applications, indoors and outdoors. Equipped with three best-in-class transducers, it offers excellent playback quality and optimized directivity. Up to 24 GTX 10 modules can be fastened on a single fly-bar.

Features

- › 143 dB max SPL
- › 1 x 1.4" neo compression drivers, 4" v.c.
- › 2 x 10" neo woofers, 3" v.c.
- › 110° x 15° 4PATH waveguide
- › Designed to operate with XPS 16K amplifier (6 modules per amp unit)
- › Durable and lightweight cabinet construction, polyurea coating
- › Heavy duty, powder coated, custom perforated front grille
- › 3 x P-COM 8 pole bayonet connectors (Gold coated, CA-COM compatible, IP 68)

Part Number

13000796



GTX 10

TWO-WAY LINE ARRAY MODULE

Acoustical specifications

Frequency Response (-10dB):	42 Hz ÷ 20.000 Hz
Max SPL @ 1m:	143 dB
Horizontal coverage angle:	110°
Vertical coverage angle:	15°

Power section

Amplification:	Bi-Amp
Nominal Impedance LF:	8 ohm
Nominal Impedance LF2:	8 ohm
Nominal Impedance HF:	8 ohm

Transducers

Compression Driver:	1 x 1.4" neo, 4" v.c.
Woofer:	2 x 10" neo, 3" v.c.

Input/Output section

Input connectors:	P-COM 8POLE
Output connectors:	P-COM 8POLE

Standard compliance

Safety agency:	CE compliant
----------------	--------------

Physical specifications

Cabinet/Case Material:	Birch plywood
Hardware:	Array fittings
Handles:	1 x side, 2 rear
Grille:	Steel with clothing
Color:	Black

Size

Height:	337 mm / 13.27 inches
Width:	750 mm / 29.53 inches
Depth:	483.5 mm / 19.04 inches
Weight:	31.5 kg / 69.45 lbs

Shipping information

Height:	539 mm / 21.22 inches
Width:	787 mm / 30.98 inches
Depth:	382 mm / 15.04 inches
Weight:	33.2 kg / 73.19 lbs

Line Art 2D

